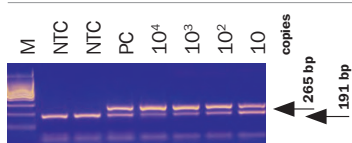




## Venor® GeM

### Features

Type of PCR	for conventional, endpoint PCR
Description	Venor® GeM is a basic PCR kit for fast, reliable and time-saving routine monitoring of mycoplasma contamination.
Recommended Use / Scope	Applicable in research and industry for direct testing of cell cultures and biologicals. Intended for research use only. Not recommended for clinical diagnostics or testing of human samples.
Kit Components	Lyophilized primer sets and nucleotides 10x reaction buffer optimized for MB Taq DNA Polymerase Lyophilized positive control DNA Lyophilized internal amplification control
Package Sizes	Primer sets and nucleotides are prepared in aliquots of 25 tests. Cat.-No. 11-1025      25 Tests Cat.-No. 11-1050      50 Tests Cat.-No. 11-1100      100 Tests Cat.-No. 11-1250      250 Tests
Result evaluation	gel electrophoresis at endpoint of PCR
Required Consumables	Polymerase. We highly recommend our reliable hot-start MB Taq DNA Polymerase, Cat.-No. 53-0050/100/200/250. PCR reaction tubes
Required lab devices	Regular PCR cycler Agarose gel electrophoresis and DNA staining system Pipetting equipment Tube centrifuge
Shelf Life and Storage	Components are maintainable at +2 to +8 °C for at least 6 months. After rehydratisation the reagents must be stored at -18 °C
EP 2.6.7 compliance	Use of Venor® GeM for QA testing of biologicals like master and working cell banks, autologous cells, culture media, bulk harvest and final product testing according to EP 2.6.7 might be applicable after appropriate sample preparation and process validation. Please contact our service line for assistance.



**Fig.** Amplified PCR products are visualized by standard gel electrophoresis.