

Mycophenolate mofetil (MMF) belongs to the newer immunosuppressive drugs and is usually used in combination with cyclosporine A or tacrolimus. As a pro-drug, MMF is rapidly hydrolysed in vivo to its active constituent mycophenolic acid (MPA). In order to reach an optimal therapeutic efficiency, i.e. to maximise drug efficiency while minimising its toxicity, the administration of MMF requires monitoring of the MPA concentration with subsequent dosage adjustment. For this purpose, our ClinRep® HPLC Complete Kit provides an easy and quick sample preparation and enables a reliable and fast analysis.



→ Easy and quick sample preparation

→ Reliable chromatography

→ Injection interval: 7 min

## Immunosuppressants

# Mycophenolic Acid in Plasma

### Test Data

Linearity:	0.1 - 40 mg/l
Recovery:	95 - 105 %
LOD:	0.06 mg/l
LLOQ:	0.1 mg/l
Intraassay precision:	3.3 %
Interassay precision:	4.0 %

### HPLC Parameters

Pump:	isocratic pump, flow rate: 1.2 ml/min
Injection volume:	50 µl
Injection interval:	7 min
UV/VIS-Detector:	215 nm
HPLC-Thermostat:	30 °C

### Sample Preparation

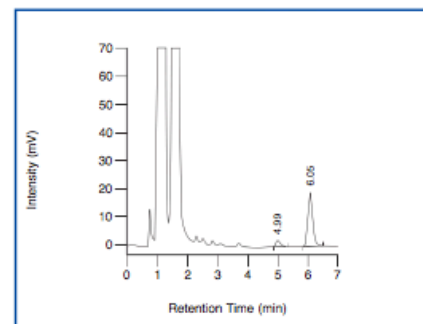
#### Precipitation:

100 µl plasma	20 µl Internal Standard IS	200 µl Precipitant P
---------------	----------------------------	----------------------

HPLC Analysis: ↓ centrifuge

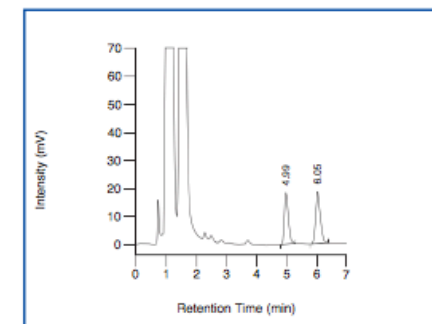
Inject 50 µl of the supernatant
---------------------------------

ClinChek® Plasma Control, Level I:



Mycophenolic acid: 4.99 min, IS: 6.05 min

ClinChek® Plasma Control, Level II:



Mycophenolic acid: 4.99 min, IS: 6.05 min

### Ordering Information

Order No.	Description	Quantity
29000	ClinRep® Complete Kit for Mycophenolic Acid in Plasma for 100 assays	1 pce.
<b>Kit Components (order no. 29000):</b>		
29010	Mobile Phase	1000 ml
29014	Test Solution	3 ml
29012	Internal Standard IS	2 ml
29013	Plasma Calibrator, lyophil.	3 ml
29020	Sample Preparation Vials	100 pcs.
29021	Precipitant P	20 ml
	Manual	1 pce.
	Quick Reference	1 pce.
<b>Start Accessories:</b>		
29030	Analytical Column with test chromatogram	1 pce.
<b>Accessories:</b>		
FK5810	PEEK-tubing (connection of prefilter and column)	1 pce.
FK5820	Stainless steel prefilter holder	1 pce.
FK5821	Replacement filter for stainless steel prefilter holder	10 pcs.
<b>ClinChek® Controls:</b>		
29080	Plasma Control, lyophil., Level I	10 x 3 ml
29081	Plasma Control, lyophil., Level II	10 x 3 ml
29082	Plasma Control, lyophil., Level III	10 x 3 ml
29083	Plasma Control, lyophil., Level I, II, III	3 x 3 x 3 ml