

This ClinRep® Complete Kit is designed for the fast analysis of CDT with on-line SPE HPLC. It features an injection interval of 9.5 min only and provides a unique chromatographical resolution compared to other commercially available test kits. Analogously to our kit with manual sample preparation (see pages 12 - 13), the on-line procedure correlates with the candidate reference method of the IFCC-CDT-WG*. Prior to the sample injection, a simple dilution step is required ("sample pretreatment", see below). Alternatively, the dilution can be performed automated via 96-well plates. For this purpose an additional ClinRep® Complete Kit is available (see pages 16 - 17).

* Working group of the IFCC for the international standardisation of CDT measurement.

Alcoholism, Drug Abuse

CDT in Serum – on-line Analysis

Test Data

LOD: 0.1 %*

LLOQ: 0.3 %*

Intraassay precision: 4.5 %

Interassay precision: 3.9 %

* depending on the amount of total transferrin and on detector sensitivity

HPLC Parameters

Pump 1: binary gradient pump,
flow rate: 1.4 ml/min

Pump 2: isocratic pump,
flow rate: 0.4 ml/min

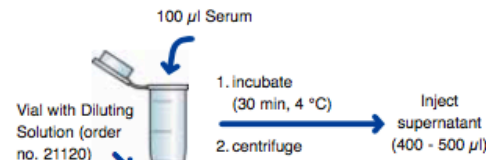
Injection volume: 400 - 500 µl

Injection interval: 9.5 min

UV/VIS-Detector: 460 nm

HPLC-Thermostat: 40 °C

Sample Pretreatment

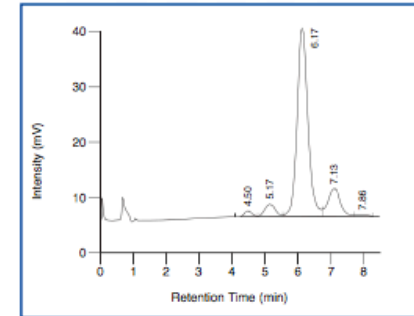


→ One step sample pretreatment

→ Fast analysis: injection interval of 9.5 min only

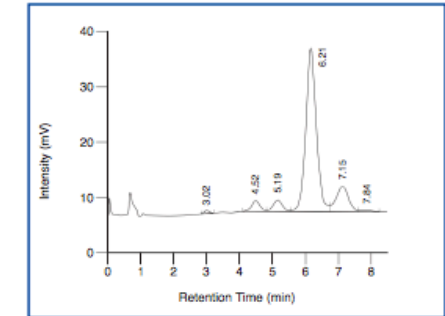
→ Unique chromatographical quality

Native sample, normal range



Disialotransferrin: 4.50 min, Trisialotransferrin: 5.17 min, Tetrasialotransferrin: 6.17 min, Pentasialotransferrin: 7.15 min, Hexasialotransferrin: 7.86 min

Native sample, pathological range



Asialotransferrin: 3.02 min, Disialotransferrin: 4.52 min, Trisialotransferrin: 5.19 min, Tetrasialotransferrin: 6.21 min, Pentasialotransferrin: 7.15 min, Hexasialotransferrin: 7.84 min

Ordering Information

Order No.	Description	Quantity
21100	ClinRep® Complete Kit for CDT in Serum for 300 assays	1 pce.
Kit Components (order no. 21100):		
21007	Mobile Phase A	3 x 21007 (3 x 2000 ml)
21008	Mobile Phase B	2000 ml
21009	Mobile Phase C	2 x 21009 (2 x 2000 ml)
21120	Vials for Sample Pretreatment with Diluting Solution	6 x 21120 (6 x 50 pcs.)
	Manual	1 pce.
	Quick Reference	1 pce.
Optional Components:		
21014	Test Solution	15 ml
Start Accessories:		
21030	Analytical Column with test chromatogram	1 pce.
21032	Cartridge incl. 1 precolumn	1 pce.
FK5820	Stainless steel prefilter holder	1 pce.
FK7400	Inline-Filter (stainless steel sieve, free of dead volume)	1 pce.
Refill Service:		
21031	Analytical Column with test chromatogram (original column needs to be returned)	1 pce.
Accessories:		
21033	Precolumn	5 pcs.
FK1102	Switching valve, Sykam (6-port/3-channel incl. electr. drive, PEEK)	1 pce.
FK5810	PEEK tubing (connection of prefilter and column)	1 pce.
FK5821	Replacement filter for stainless steel prefilter holder	10 pcs.
FK7340	Sealings and sieves	4 pcs. each
FW3000	Fixed-Wavelength-VIS-Detector (460 nm), complete	1 pce.
RC2002	Sodium-Hypochlorite-Solution (5 %)	12 ml
ClinChek® Controls:		
21080	Serum Control, lyophil., Level I	10 x 1 ml
21081	Serum Control, lyophil., Level II	10 x 1 ml
21082	Serum Control, lyophil., Level I, II	2 x 5 x 1 ml