


## ClinTest® - Standard

Standard Solution for Antiasthmatics/

Standardlösung für Antiasthmatika

for HPLC Assay in Plasma/

für HPLC Bestimmung im Plasma

REF	12011
LOT	645
	2011-11

Constituent / Bestandteil	Concentration* / Konzentration*
Theobromine / Theobromin	0.5 mg/l (2.77 µmol/l)
Theophylline / Theophyllin	1.0 mg/l (5.55 µmol/l)
Internal Standard / Interner Standard	1.0 mg/l (4.46 µmol/l)
Caffeine / Coffein	0.5 mg/l (2.57 µmol/l)

\*: Weighed analyte amounts; values not assayed / Analyteneinwaage; Werte nicht experimentell ermittelt.

### Intended use:

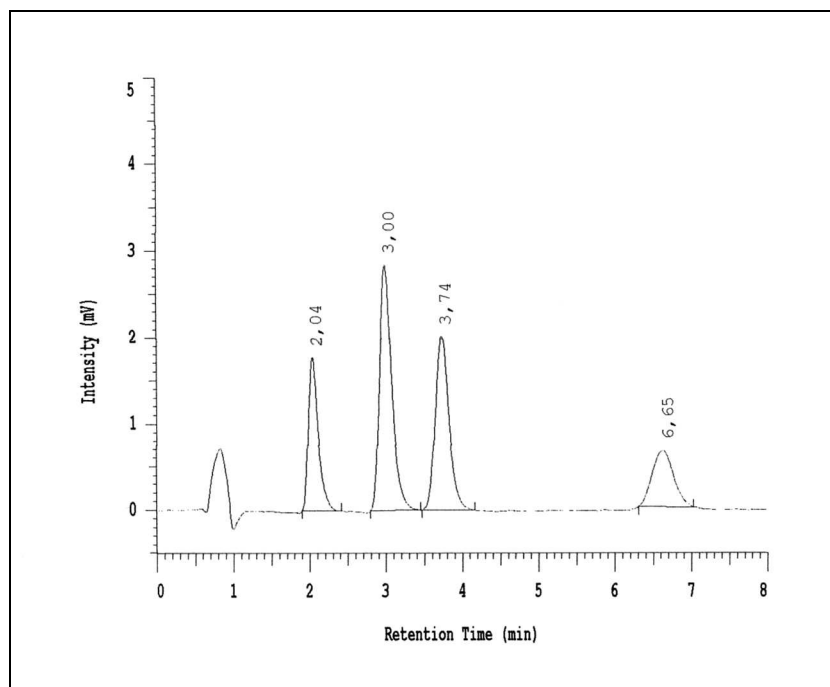
ClinTest® Standard Solutions are intended to check the daily performance of your HPLC - system. This standard solution needs no preparation and can be injected directly into your analysing system (injection volume: 20 µl). After separation, please compare the retention times of the peaks with those of earlier analyses. If you run the standard solution the first time, you can compare your results with the chromatogram on the backside of this data sheet. Besides retention times you are also able to check peak shape, integration and baseline with your standard chromatogram. For calibration, the ClinCal® Plasma Calibrator, order no.: 12013 has to be used.

### Storage and stability:

Originally closed and stored at 2 - 8 °C, the ready -to-use standard solution is stable for 36 months, but not longer than the expiration date printed on the label. After opening the vial, the standard solution is stable for at least 4 weeks, when stored at 2 - 8 °C.

.4422(r)-409766(u)1.4422(t)0.724042(i)4.99766(o) 42.4p2., ( )-59.5569(d)1.4422(a)1.4422(t)0.721099(e)1.4422( )-5

**Chromatogram of the standard solution:  
Musterchromatogramm der Standardlösung:**



Theobromine / Theobromin	2.04 min
Theophylline / Theophyllin	3.00 min
Internal Standard / Interner Standard	3.74 min
Caffeine / Coffein	6.65 min