



Venor® GeM Advance

Features

Type of PCR	for conventional, endpoint PCR	
Description	Venor® GeM Advance contains PCR reaction tubes pre-coated with all PCR reagents to reduce the total assay time without need to prepare aliquots of a master mix. For additional convenience the gel loading buffer and dye are already included in the reaction buffer. After thermal cycling the PCR can be loaded directly on the agarose gel.	
Recommended Use / Scope	Applicable in research for direct testing of cell cultures and cell culture-derived biologicals. Intended for research use only. Not recommended for clinical diagnostics or testing of human samples.	
Kit Components	Primer sets, nucleotides and internal control DNA, lyophilized, filled in 0.2 ml PCR reaction tubes Rehydration buffer including gel loading buffer and running dye Positive controls, lyophilized, filled in 0.2 ml PCR reaction tubes PCR grade water	
Package Sizes	Cat.-No. 11-7024	24 Tests
	Cat.-No. 11-7048	48 Tests
	Cat.-No. 11-7096	96 Tests
	Cat.-No. 11-7240	240 Tests
Result evaluation	gel electrophoresis at endpoint of PCR	
Required Consumables	Polymerase. We highly recommend our reliable hot-start MB Taq DNA Polymerase, Cat.-No. 53-0050/100/200/250.	
Required lab devices	Regular PCR cycler Agarose gel electrophoresis and DNA staining system Pipetting equipment Tube centrifuge	
Shelf Life and Storage	Kit components are maintainable at +2 to +8 °C for at least 6 months. After rehydration of the individual PCR tubes the reagents must be used within 1 hour.	
EP 2.6.7 compliance	No	

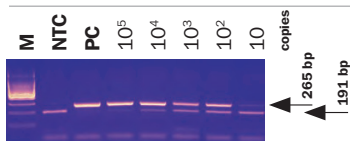


Fig. Amplified PCR products are visualized by standard gel electrophoresis.