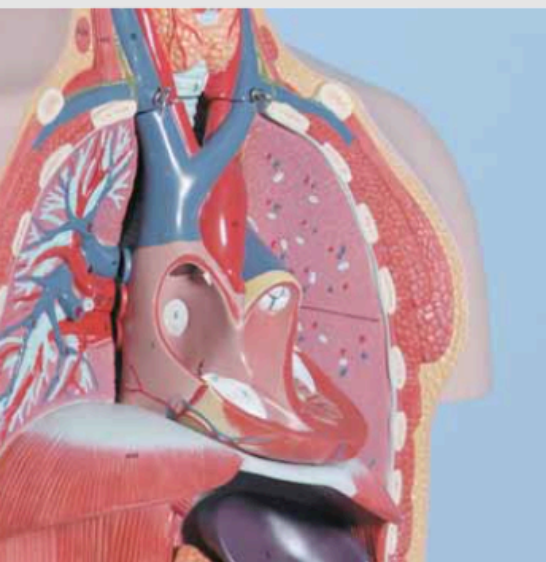


Serotonin is an important neurotransmitter. The main metabolite of serotonin is 5-hydroxyindole acetic acid (5-HIAA) which is excreted with urine. Patients with carcinoid tumors usually show increased levels of serotonin in plasma and urine as well as of 5-HIAA in urine (see pages 34 - 35). As some tumors show a decreased serotonin turnover (e.g. AADC-deficient tumors), low 5-HIAA levels must be verified by the determination of serotonin. The test kit of RECIPE provides a highly selective sample preparation and guarantees a reliable chromatography.



→ Highly selective sample clean up

→ Reliable chromatography

→ Injection interval: 10 min

Biogenic Amines

Serotonin in Urine

Test Data

Linearity: 5 - 1000 µg/l
 Recovery: 70 - 85 %
 LOD: 3 µg/l
 LLOQ: 5 µg/l
 Intraassay precision: 3 %
 Interassay precision: 4 %

HPLC Parameters

Pump: isocratic pump,
 flow rate: 1.0 ml/min
 Injection volume: 20 µl
 Injection interval: 10 min
 EC-Detector: potential: 450 mV,
 sensitivity: 50 nA
 HPLC-Thermostat: 30 °C

Sample Preparation

Dilution:

2 ml urine	4 ml Stabilising Reagent S	50 µl Internal Standard IS
------------	----------------------------	----------------------------

↓ adjust pH to 4.5 - 6.5

Apply the whole sample on the sample preparation column

↓ wash (HPLC water and Washing Solution W)

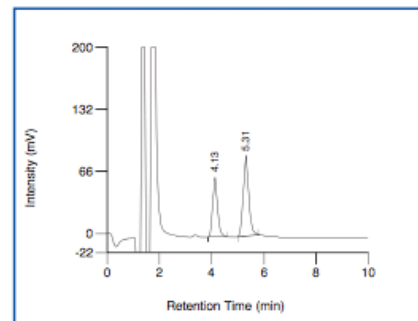
Elution:

Apply 5 ml Eluting Reagent E

↓ collect the eluate

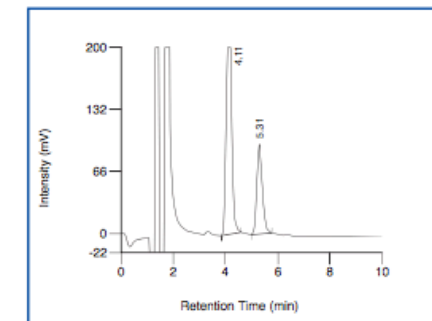
Inject 20 µl

ClinChek® Urine Control, Level I



Serotonin: 4.13 min, IS: 5.31 min

ClinChek® Urine Control, Level II



Serotonin: 4.11 min, IS: 5.31 min

Ordering Information

Order No.	Description	Quantity
7000	ClinRep® Complete Kit for Serotonin in Urine for 100 assays	1 pce.
Kit components (order no. 7000):		
6710	Mobile Phase	1000 ml
6711	Standard Solution, lyophil.	5 x 2 ml
6712	Internal Standard IS, lyophil.	5 x 1 ml
7013	Urine Calibrator, lyophil.	5 x 8 ml
7020	Sample Preparation Columns	2 x 7020 (2 x 50 pcs.)
7021	Stabilising Reagent S	2 x 7021 (2 x 200 ml)
7022	Washing Solution W	200 ml
7023	Eluting Reagent E	500 ml
	Manual	1 pce.
	Quick Reference	1 pce.
Start Accessories:		
7030	Analytical Column with test chromatogram	1 pce.
Accessories:		
FK4000	Column Rack (for 20 columns)	1 pce.
ClinChek® Controls:		
8820	Urine Control, lyophil., Level I	10 x 8 ml
8821	Urine Control, lyophil., Level II	10 x 8 ml
8822	Urine Control, lyophil., Level I, II	2 x 5 x 8 ml