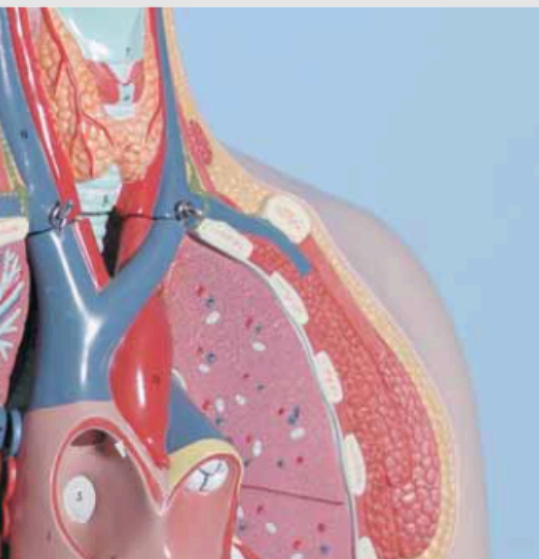


Vitamin B6 consists of three vitamers: pyridoxine, pyridoxal and pyridoxamine. The metabolically active coenzyme form of vitamin B6 is pyridoxal-5'-phosphate (PLP). Clinical signs of vitamin B6 deficiency are mainly expressed in alterations of the skin, neurological disorders, and anemias. In addition to this, a low vitamin B6 status may be responsible for an increase of the homocysteine plasma level (hyperhomocysteinemia, see pages 46 - 47, and 122 - 123). The RECIPE ClinRep® Complete Kit allows for the determination of the vitamin B6 forms pyridoxal and PLP in plasma and whole blood. The test features high analytical sensitivity and can be easily combined with the test kits for the vitamins B1 and B2 (see combi kit, pages 68 - 69).



→ Excellent sensitivity:  
0.4 µg/l

→ Quick sample preparation

→ Injection interval: 10 min

→ Combineable with B1  
and B2 test kits

## Vitamin Status

# Vitamin B6 in Plasma / Whole Blood

### Test Data

#### Determination from plasma / from whole blood

Linearity:	Pyridoxal: 0.6 - 800 µg/l / 0.6 - 1200 µg/l Pyridoxal-5'-phosphate: 0.6 - 800 µg/l / 0.6 - 1500 µg/l
Recovery:	95 - 100 % / 95 - 100 %
LOD:	0.4 µg/l for both analytes and both matrices
LLOQ:	0.6 µg/l for both analytes and both matrices
Intraassay precision:	Pyridoxal: 5.1 % / 8.4 % Pyridoxal-5'-phosphate: 2.5 % / 2.3 %
Interassay precision:	Pyridoxal: 6.9 % / 9.2 % Pyridoxal-5'-phosphate: 3.1 % / 2.9 %

### HPLC Parameters

Pump:	isocratic pump, flow rate: 1.0 ml/min
Pump (Reagent N):	flow rate: 0.2 ml/min
Injection volume:	50 µl
Injection interval:	10 min
Fluorescence detector:	370 nm (exc.), 470 nm (em.)
Temperature:	25 °C (or ambient)

### Sample Preparation

#### Extraction:

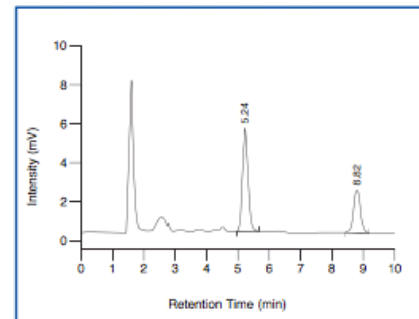
100 µl sample	100 µl Precipitant P
---------------	----------------------

#### HPLC Analysis:

↓ centrifuge

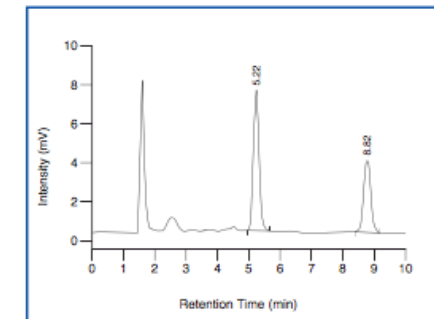
Inject 50 µl of the supernatant
---------------------------------

ClinChek® Whole Blood Control, Level I



Pyridoxal-5'-phosphate: 5.24 min, Pyridoxal: 8.82 min

ClinChek® Whole Blood Control, Level II



Pyridoxal-5'-phosphate: 5.22 min, Pyridoxal: 8.82 min

### Ordering Information

Order No.	Description	Quantity
26000	ClinRep® Complete Kit for Vitamin B6 in Plasma / Whole Blood for 100 assays	1 pce.
<b>Kit Components (order no. 26000):</b>		
26010	Mobile Phase	1000 ml
26011	Standard Solution	3 ml
26013	Serum Calibrator, lyophil.	3 ml
26020	Sample Preparation Vials	100 pcs.
26021	Precipitant P	10 ml
24626	Reagent N	250 ml
	Manual	1 pce.
	Quick Reference	1 pce.
<b>Optional Components:</b>		
24513	Whole Blood Calibrator, lyophil.	5 x 2 ml
<b>Start Accessories:</b>		
27030	Analytical Column with test chromatogram	1 pce.
27032	Guard Column Holder incl. 1 Guard Column	1 pce.
<b>Accessories:</b>		
27033	Guard Column	5 pcs.
FK2000	ClinLab® Peristaltic pump	1 pce.
FK2001	Replacement tubing for peristaltic pump	2 pcs.
FK5121	T-Union (PEEK), 1/16"	1 pce.
FK5810	PEEK-tubing (connection of prefilter and column)	1 pce.
FK5820	Stainless steel prefilter holder	1 pce.
FK5821	Replacement filter for stainless steel prefilter holder	10 pcs.
<b>ClinChek® Controls:</b>		
8870	Serum Control, lyophil., Level I	10 x 5 ml
8871	Serum Control, lyophil., Level II	10 x 5 ml
8872	Serum Control, lyophil., Level III	10 x 5 ml
8873	Serum Control, lyophil., Level I, II, III	3 x 3 x 5 ml
8874	Whole Blood Control, lyophil., Level I	10 x 2 ml
8875	Whole Blood Control, lyophil., Level II	10 x 2 ml
8876	Whole Blood Control, lyophil., Level I, II	2 x 5 x 2 ml